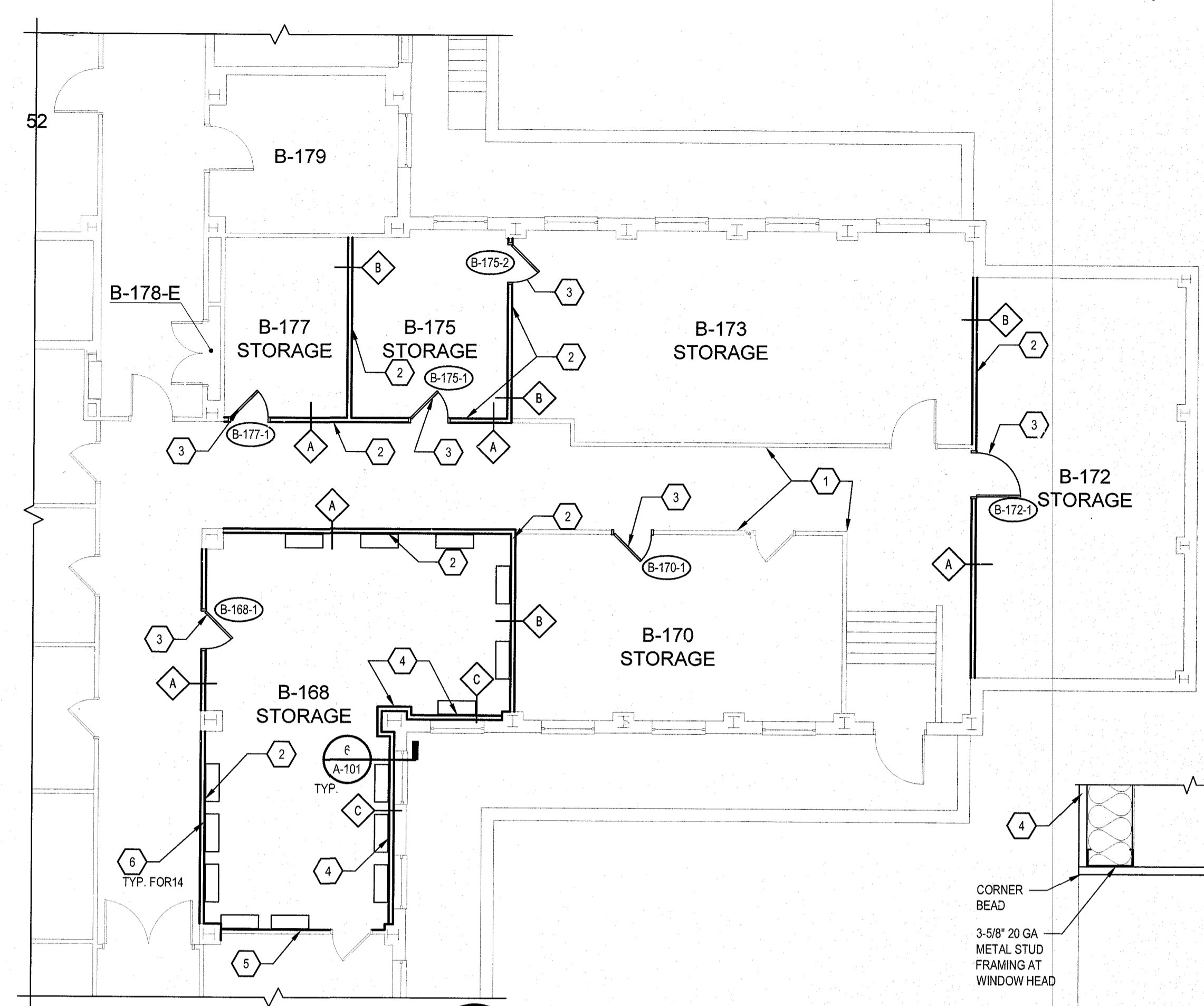
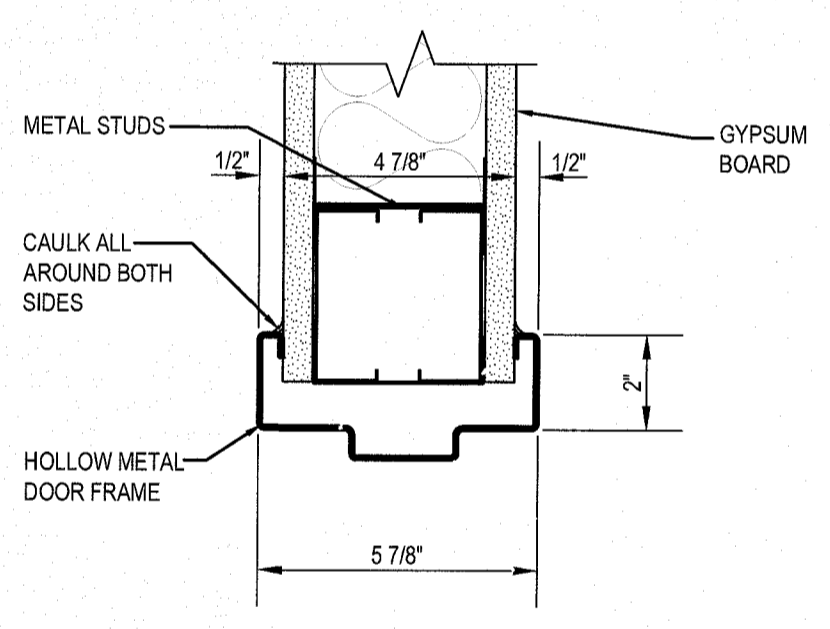
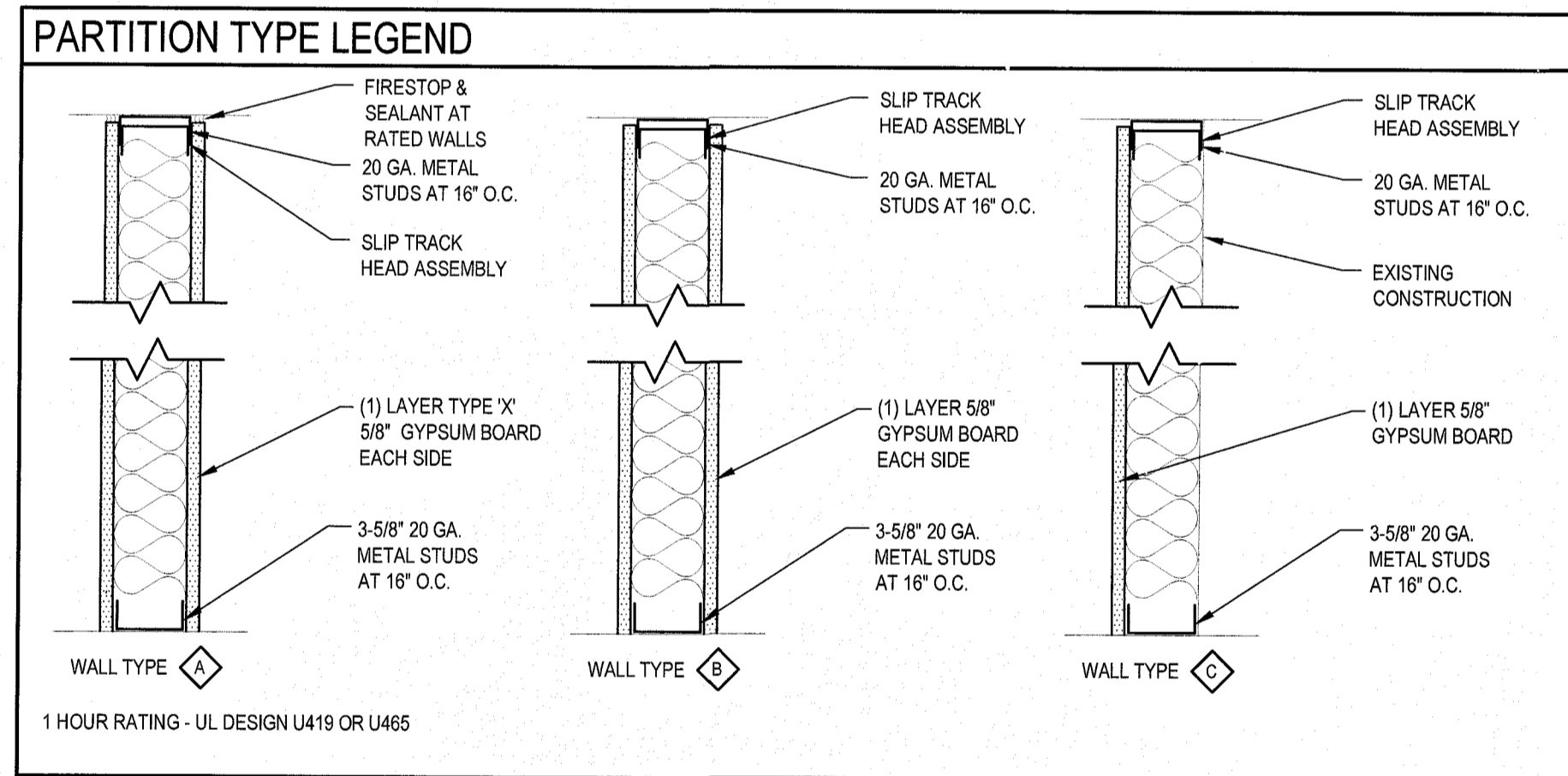


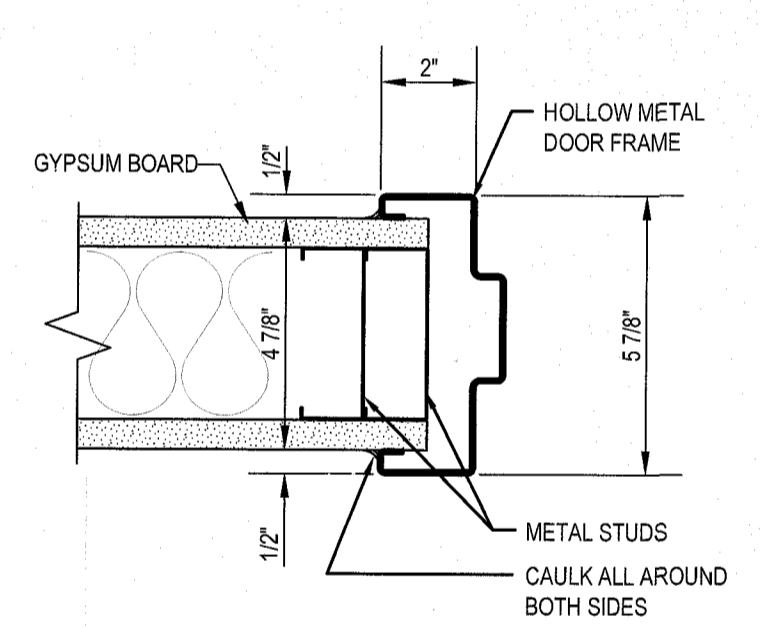
1 REMOVAL PLAN
 A-101 SCALE: 1/8" = 1'-0"



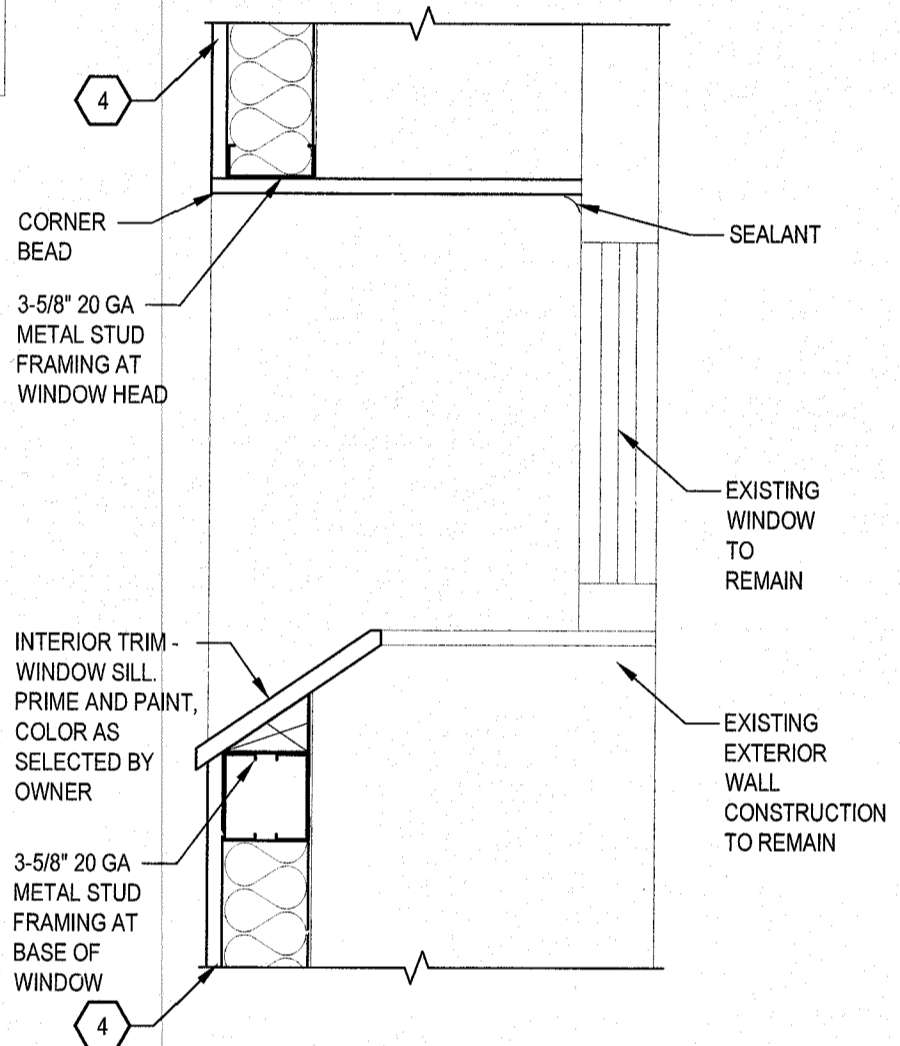
2 FLOOR PLAN
 A-101 SCALE: 1/8" = 1'-0"



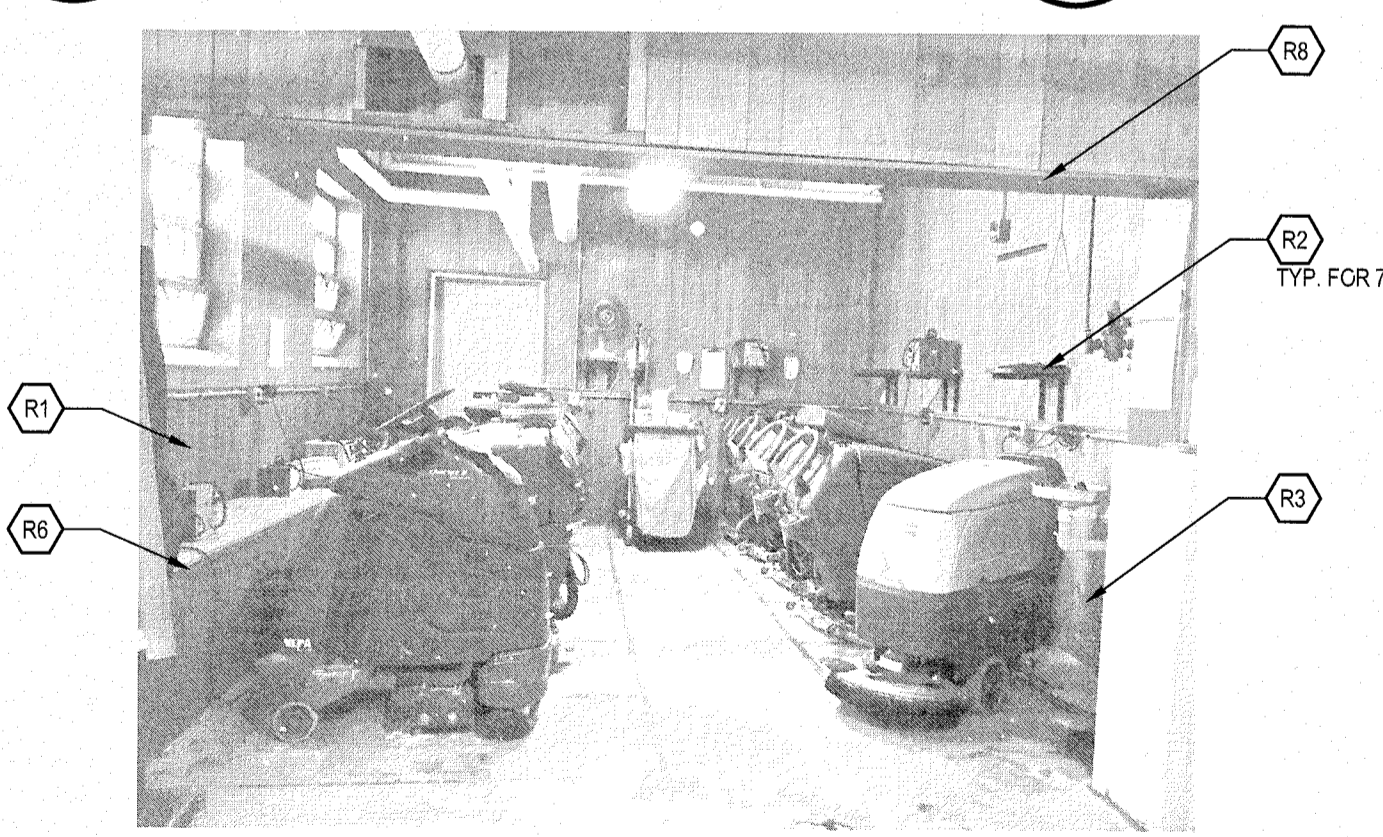
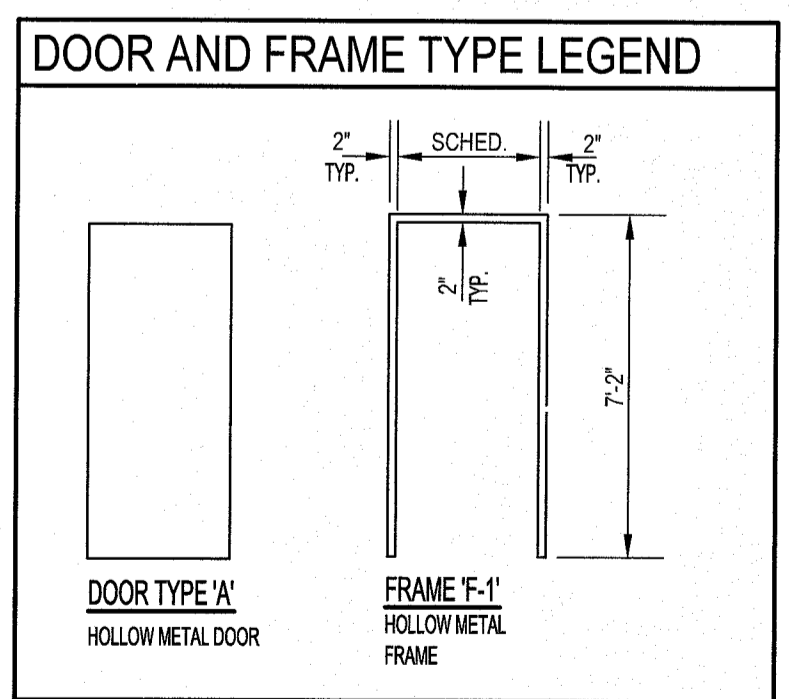
3 HEAD DETAIL
 A-101 SCALE: 3" = 1'-0"



4 HEAD DETAIL
 A-101 SCALE: 3" = 1'-0"



6 FLOOR PLAN
 A-101 SCALE: 1-1/2" = 1'-0"



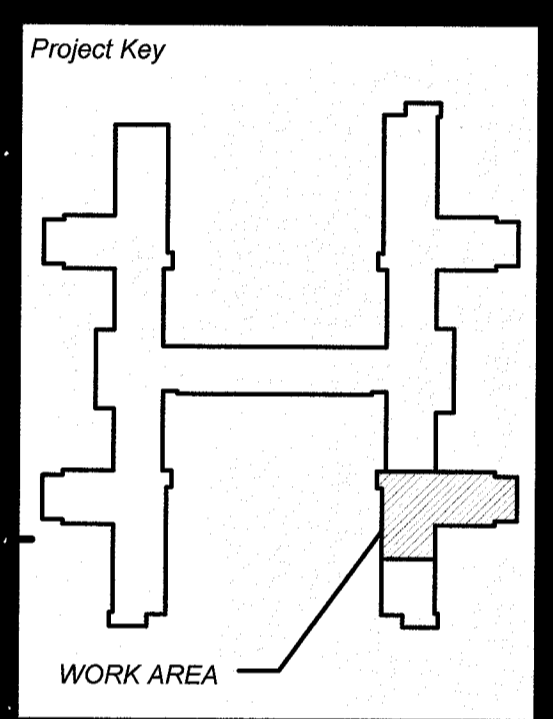
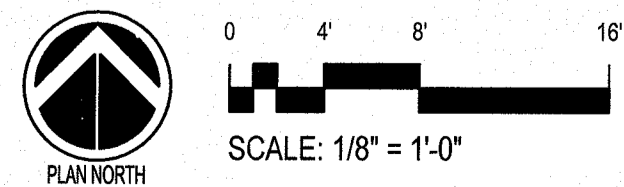
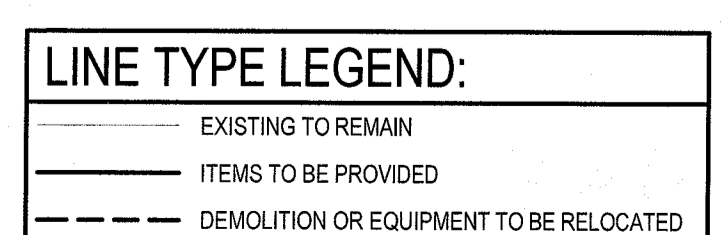
5 PHOTO DETAIL - REMOVAL
 A-101 SCALE: NOT TO SCALE

KEY NOTE LEGEND	
R1	REMOVE WOOD PANELING, MASONRY WALL/EXISTING SUBSTRATE TO REMAIN. PATCH HOLES AT EXTERIOR WALL WITH NON-SHRINK GROUT/PLASTER PATCH TO MATCH EXISTING.
R2	REMOVE WOOD SHELVING, SUPPORT BRACKETS, ASSOCIATED HARDWARE AND DISPOSE.
R3	REMOVE WOOD FRAMED STUD WALL AND GYPSUM BOARD FROM FLOOR TO UNDERSIDE OF DECK ABOVE AS AC. REFER TO DRAWING AB-101 FOR REMOVAL OF WALL AND FLOOR TILE AS AC MATERIALS (TYP.).
R4	REMOVE DOOR, FRAME AND HARDWARE AND DISPOSE.
R5	SAW CUT AND REMOVE PORTION OF EXISTING METAL STUD AND GYPSUM BOARD WALL TO ALLOW FOR INSTALLATION OF DOOR AND FRAME. SAW CUTTING AND REMOVAL OF PORTION OF WALL TO BE REMOVED AS AC MATERIAL. REFER TO DRAWING AB-101 (TYP.).
R6	REMOVE HALF WALL AND WOOD SHELF/SILL AT EXTERIOR WALL AND DISPOSE.
R7	REMOVE MASONRY BASE WALL TO FINISH FLOOR. REFER TO DRAWING AB-101 FOR REMOVAL OF WALL AS AC MATERIAL.
R8	REMOVE PANELING SOFFIT/BULKHEAD TO DECK ABOVE. PATCH HOLES AT DECK WITH PLASTER/NON-SHRINK GROUT. PRIME AND PAINT TO MATCH EXISTING.
1	EXISTING METAL STUD AND GYPSUM BOARD WALL TO REMAIN. CLEAN AND PREPARE FOR PAINTING. PRIME AND PAINT. COLOR AS SELECTED BY OWNER.
2	PROVIDE 20 GAGE METAL STUD FRAMING AND GYPSUM BOARD WALL SYSTEM, HOURLY FIRE RATING AS INDICATED. TAPE, SAND, PRIME AND PAINT. COLOR AS SELECTED BY OWNER.
3	PROVIDE HOLLOW METAL DOOR, FRAME, AND HARDWARE. LOCKSET AND CYLINDER TO MATCH FACILITY STANDARD.
4	PROVIDE 20 GAGE METAL STUD FRAMING AND GYPSUM BOARD WALL SYSTEM AT PANELING REMOVAL. PROVIDE FRAMING AND GYPSUM BOARD CLOSURE TRIM AT WINDOW OPENINGS. REMOVE AND PROVIDE WINDOW SILL AS REQUIRED TO ACCOMMODATE WALL THICKNESS, MATERIAL TO MATCH EXISTING (TYP.). TAPE, SAND, PRIME AND PAINT WALLS, AND WINDOW TRIM, COLOR AS SELECTED BY OWNER.
5	PROVIDE (1) LAYER 5/8" GYPSUM BOARD ON EXISTING STUDS. TAPE, SAND, PRIME AND PAINT. COLOR AS SELECTED BY OWNER.
6	PROVIDE SHELVING UNIT, BRACKETS AND HARDWARE. PROVIDE BLOCKING AT WALL ASSEMBLY FOR MOUNTING HARDWARE PER SHELVING MANUFACTURER'S INSTALLATION INSTRUCTIONS. COORDINATE LOCATION WITH RECEPTACLES, REFER TO ELECTRICAL DRAWINGS. CONFIRM FINAL LOCATION AND MOUNTING HEIGHT A.F.F. WITH OWNER.

NOTE: CLEAN, PREPARE, PRIME AND PAINT CEILINGS THROUGHOUT WORK AREA. COLOR: CEILING WHITE.

DOOR AND FRAME SCHEDULE															
No.	ROOM NAME	DOOR				FRAME				HARDWARE GROUP	REMARKS				
		SIZE	THICK	TYPE	MAT.	RATING	TYPE	MAT.	FIN.						
B168-1	WORK ROOM/STORAGE	3'-0" X 7'-0"	1 1/2"	A	H.M.	FACTORY	3/4 HR	F-1	H.M.	PTD.	3/4 HR	3/4-101	4/A-101	HW-1	
B-170-1	WORK ROOM/STORAGE	3'-0" X 7'-0"	1 1/2"	A	H.M.	FACTORY	3/4 HR	F-1	H.M.	PTD.	3/4 HR	3/4-101	4/A-101	HW-1	
B-172-1	WORK ROOM/STORAGE	3'-0" X 7'-0"	1 1/2"	A	H.M.	FACTORY	3/4 HR	F-1	H.M.	PTD.	3/4 HR	3/4-101	4/A-101	HW-1	
B-175-1	WORK ROOM/STORAGE	3'-0" X 7'-0"	1 1/2"	A	H.M.	FACTORY	3/4 HR	F-1	H.M.	PTD.	3/4 HR	3/4-101	4/A-101	HW-1	
B-175-2	WORK ROOM/STORAGE	3'-0" X 7'-0"	1 1/2"	A	H.M.	FACTORY	3/4 HR	F-1	H.M.	PTD.	3/4 HR	3/4-101	4/A-101	HW-1	
B-177-1	WORK ROOM/STORAGE	3'-0" X 7'-0"	1 1/2"	A	H.M.	FACTORY	3/4 HR	F-1	H.M.	PTD.	3/4 HR	3/4-101	4/A-101	HW-1	

DOOR HARDWARE SCHEDULE				
QUANTITY	DESCRIPTION	MODEL	FINISH	MANUFACTURER
3	HINGE	56B1 4.6x4.5 NRP	652	IVES
1	MORTISE LOCKSET	354	626	BEST
1	KICK PLATE	8402 S32D 12"x34"	SS	IVES
1	SURFACE CLOSER	4040 XP	689	LCN
1	WALL STOP	WS402CCV	626	IVES
3	SILENCERS	S764	GRAY	IVES



REVISIONS		
Rev No	Description	Date

Client: **NEW YORK STATE OF OPPORTUNITY Office of Mental Health**

Project Title: **B39 ASBESTOS ABATEMENT CENTRAL NEW YORK PSYCHIATRIC CENTER**

Drawing Title: **REMOVAL AND FLOOR PLANS**

Phase: **ISSUED FOR BID**

Drawn By: **DVS** | Checked By: **MAH** | Date: **03/16/2018**

Seal & Signature: **STATE OF NEW YORK PROFESSIONAL ENGINEER**

Scale: **1/8" = 1'-0"**

Drawing Number: **A-101**

3 of 8