

ADDENDUM No. 2

Date: 10/9/2018

DORMITORY AUTHORITY - STATE OF NEW YORK

**Deyo Hall Rehabilitation and Upper Floor Addition
 State University of New York at New Paltz
 3418309999/CR10**

This **ADDENDUM** is hereby included in and made part of the Contract whether or not attached thereto. All requirements of the original Specifications and Drawings shall remain in force except as noted by this **ADDENDUM No. 2**.

THE PURPOSE OF THIS ADDENDUM IS TO CHANGE THE FOLLOWING ITEMS:

Item #	Specification Section	Changes to the Specifications
Item #1.	Table of Contents	ADD: Specification Section: "099410 Multi Color Interior Finishing"
Item #2.	083500	ADD: the following bold text to 2.1A: "A. Side Folding Grille: SL Paravent Bi-parting Side Folding Door..."
Item #3.	083500	ADD: the following bold text to 2.1A1: <ul style="list-style-type: none"> a. "Panels: 4-1/4 inch wide with 2 inch high bottom and top plates, truss like aluminum and full height aluminum panels with 51% viewable area. Panels connected with single piece vertical 0.6125 x 0.5 inch aluminum hinges. b. Curtain Clear Opening: 8'-6" Wide x 4'-10" High with 4'-9" Radius. See drawings. c. Locking Bi-Part Post: Extruded aluminum with standard locking hardware and handles flush within post. Provide on one section of door to allow doors to lock in middle of opening. Provide ADA compliant lock on the secure side. d. Overhead Track: Extruded Aluminum, 1-3/8 inches wide by 1-5/8 inches high, with continuous extruded profile seamed together by Alignment Bars and Track Pins. Track to accept 1-1/8 inch nylon Trolleys and carry weight of complete curtain. Provide custom curve per drawings.

		<p>e. Finishes: All members to be clear anodized.</p> <p>f. Operation: Manual push-pull. Provide pull straps at countertop applications.</p> <p>g. Pocket Doors: Provide manufacturer's standard pocket doors at both pockets."</p>
Item #4.	088000	DELETE: Paragraph 2.1 H in its entirety.
Item #5.	093013	<p>CHANGE: Paragraph 2.1 E to: "E. Ceramic Tile Type 2 (Wall): 3" x 12", Pieces by Creative Materials Corp. or accepted equal.</p> <ol style="list-style-type: none"> 1. Color A: Depth Ivory 2. Color B: Depth Taupe"
Item #6.	096500	<p>CHANGE: Paragraph 2.1A to: "A. Vinyl Composition Tile: 12 x 24" Raffia Tile by Armstrong of accepted equal..."</p>
Item #7.	099410	ADD: Specification Section 099410 Multi Color Interior Finishing.

Item #	Drawing	Changes to Drawings
Item #8.	S-503	<p>CHANGE: K1/S-503 Note 6 to: "6. Provide intumescent coating over reinforcing and provide concrete underlayment over the intumescent coating immediately upon completion of FRP installation to protect the entire system."</p>
Item #9.	A001	<p>ADD: General Note 10: "10. All penetrations through the 1st floor slab must be firestopped to a 2 hour fire rating."</p>
Item #10	C-160	<p>ADD: The following note for the Plant List on Drawing C-160: "See Landscaping Plan on this sheet for locations and quantities of plants."</p>
Item #11	A400	<p>ADD: The following to the Finish Schedule Key: "ASC Acrylic Spray-on Coating"</p>
Item #12	A400	<p>CHANGE: The finish for walls from "P" to "ASC" at the following rooms: 021A (North wall only) 100A (North, east, south, and west walls) 100B (North wall only)</p>

		CHANGE: The finish for walls from "P" to "P/ASC" at the following room: 100B (South wall only)
Item #13	A402	CHANGE: The frame material for Door 019A from "HM" to " AL. "
Item #14	A402	CHANGE: The Door Size Width of Door 115 from "3'-0"" to " (2) 3'-0 "."
Item #15	A402	ADD: General Door Schedule Note 1: "1. Listed fire rating is for the opening protective. See fire resistive frame types for required fire ratings of fire resistive frames with glazing."
Item #16	A603	REPLACE: Enlarged Plan K1/A603 with attached AD.2.1.
Item #17	A603	ADD: The following bold text to Elevation 2A in G1/A603: " Base Bid: Acrylic spray-on coating. Add alternate: Molded stone panel."
Item #18	A604	ADD: The following bold text to Elevation 2B in K1/A604: " Base Bid: Acrylic spray-on coating. Add alternate: Molded stone panel (typ.)."
Item #19	A604	ADD: The following note to Elevation 2A in K1/A604: "Base Bid: Acrylic spray-on coating. Add alternate: Molded stone panel." This note applies to hatched areas at both ends of the elevation.
Item #20	A900	ADD: General Signage Note 1: "1. See Drawings A800 – A804 for locations and quantities of signs additional to locations noted at various sign types."
Item #21	A900	ADD: The following note at Sign Type M: "Provide (1) vinyl letter at each bedroom and suite bathroom door."

END OF ADDENDUM #2

**SECTION 099410
MULTI COLOR INTERIOR FINISHING**

PART 1 - GENERAL

1.1 SUMMARY

- A. Work Included: Acrylic spray-on coating.

1.2 QUALITY ASSURANCE

- A. Applicator shall submit a letter of verification to the Architect from the distributor stating that the applicator has attended the manufacturer's training program.
- B. Coordination of Work: Review other sections of these specifications in which prime paints are provided to ensure compatibility of total coatings system for various substrates. Upon request from other trades, furnish information or characteristics of finish materials provided for use, to ensure compatible prime coats are used.

1.3 SUBMITTALS

- A. Product Data: Submit specifications, installation instructions and general recommendations from manufacturer.
- B. Samples: Submit color and texture samples for selection of color and texture.
- C. Field Samples: Provide full coated finish samples on actual wall surfaces to further verify selections made for color and textural characteristics and to represent completed work for qualities of appearance. Locate samples in location and of size as directed by Architect.

1.4 JOB CONDITIONS

- A. Deliver materials to job site in original, new and unopened packages and containers bearing manufacturer's name and label.
- B. Store materials not in actual use in tightly covered containers. Maintain containers used for storage in a clean condition, free of foreign materials and residue.
- C. Take all precautions to ensure that workmen and work areas are adequately protected from health hazards resulting from handling, mixing and application. Provide adequate ventilation of spaces while applying coatings.
- D. Apply only when temperature of surfaces to be coated and surrounding air temperatures are between 50°F and 100°F.

PART 2 - PRODUCTS

2.1 MATERIALS

- A. Acrylic Spray-On Coating: Ambient Metallic by Wolf Gordon or accepted equal. Interior Coating system schedule as follows:
 - 1. Composition: GOH 12393141.
 - 2. Paint Base: Waterbased polyurethane acrylic.
 - 3. Application: Spray.
 - 4. Durability: 8,200 scrubs in accordance with ASTM D2486.
 - 5. VOC Content: 74 g/L

PART 3 - EXECUTION

3.1 INSPECTION

- A. Examine the substrate and conditions under which the work is to be installed. Do not proceed with the work until all unsatisfactory conditions are corrected.

3.2 PREPARATION

- A. Protection
 - 1. Furnish drop cloths and mask all rooms and areas to adequately protect flooring, trim, ceiling and other work from overspray.
 - 2. Remove or otherwise protect plated hardware, accessories, device plates, lighting plates, factory-finished work and similar items. Upon completion of each space carefully reset all items. Use only skilled mechanics for removal, resetting and protection.
- B. Surface Preparation
 - 1. Gypsum Wallboard and Plaster: All cracks, scratches, dents, abrasions and other surface flaws shall be filled with joint compound or spackle and sanded smooth and flush with surrounding surfaces.
 - 2. Other Substrates: Preparation of other substrates shall be in accordance with recommendations of manufacturer.
 - 3. Existing Surfaces: In addition to procedure specified above, do all required scraping, sanding, spackling, puttying and caulking of existing surfaces to produce smooth and uniform sub-surfaces, free of paint ridges, runs, sags and other flaws.

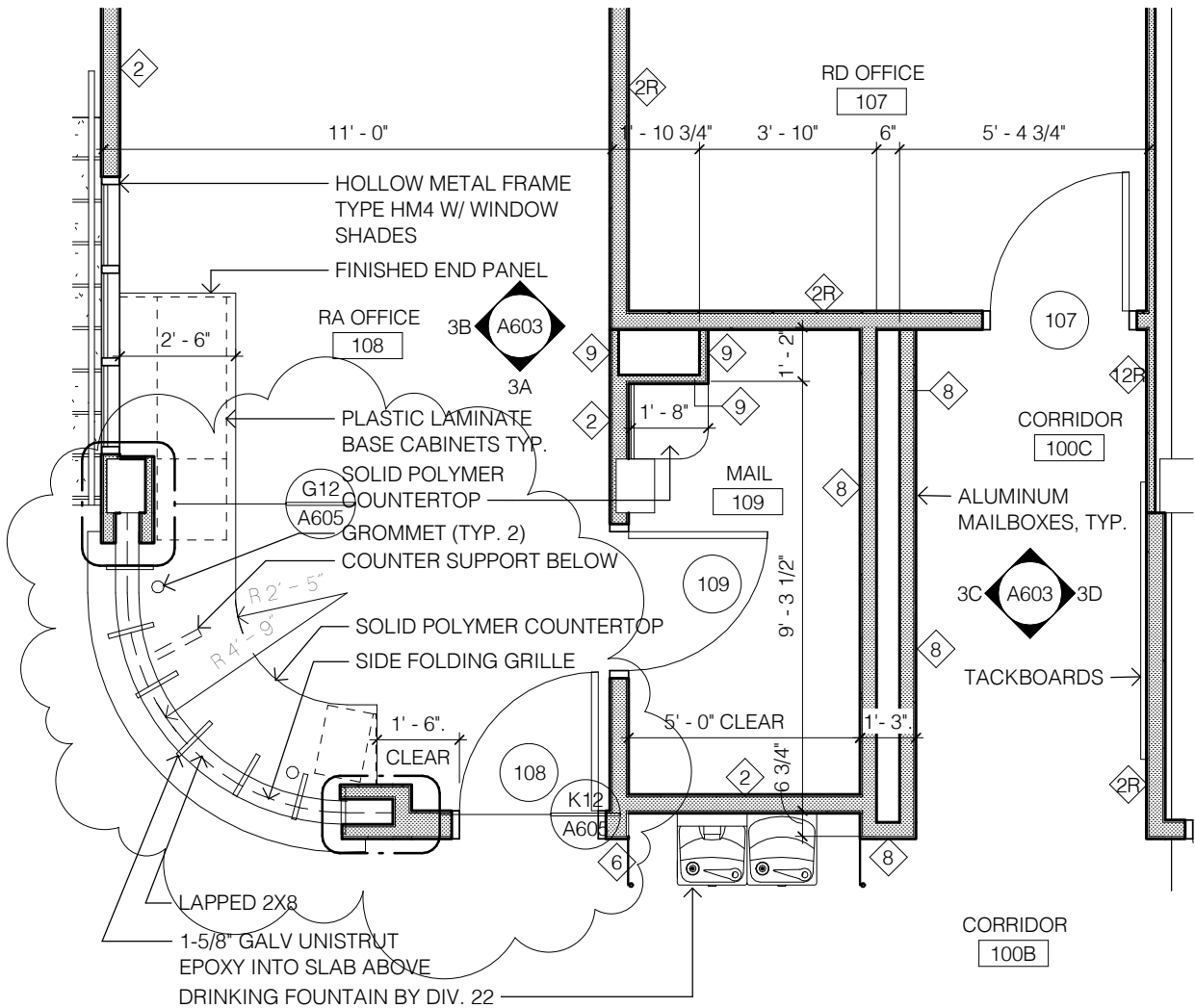
3.3 APPLICATION

- A. Apply materials in strict accordance with manufacturer's instructions using equipment in conformance with manufacturer's recommendations.
- B. Primers shall be applied in as many coats as necessary to the substrate to produce a uniform appearance.
- C. Sand primer with 120 grit sandpaper prior to application of the finish coats.

- D. Primers shall be completely dry prior to the application of finish coats.
- E. The finish coat shall be spray applied in two separate steps to match the control sample.

3.4 PROTECTION

- A. Cleaning: At the completion of the work, remove all paint, overspray, oil, grease or other stains caused by this work, from floors, walks, glass, fixtures, hardware, equipment and other surfaces.
- B. Touch-up: Touch-up and repair any work applied under the contract which, for any reason, has been damaged during construction.



Lomonaco & Pitts, Architects P.C.
297 River Street, Troy, NY 12180
518.272.4481 Fax 518.272.1605

architecture+

PROJECT

DEYO HALL REHABILITATION AND
UPPER FLOOR ADDITION
STATE UNIVERSITY OF NEW YORK AT NEW
PALTZ

TITLE

ENLARGED PLAN

JOB NO.
341830

DATE
10/08/18

SCALE
1/4" = 1'-0"

ADDENDUM NO.

2

REFERENCED DRAWING

A603

DRAWING

AD.2.1